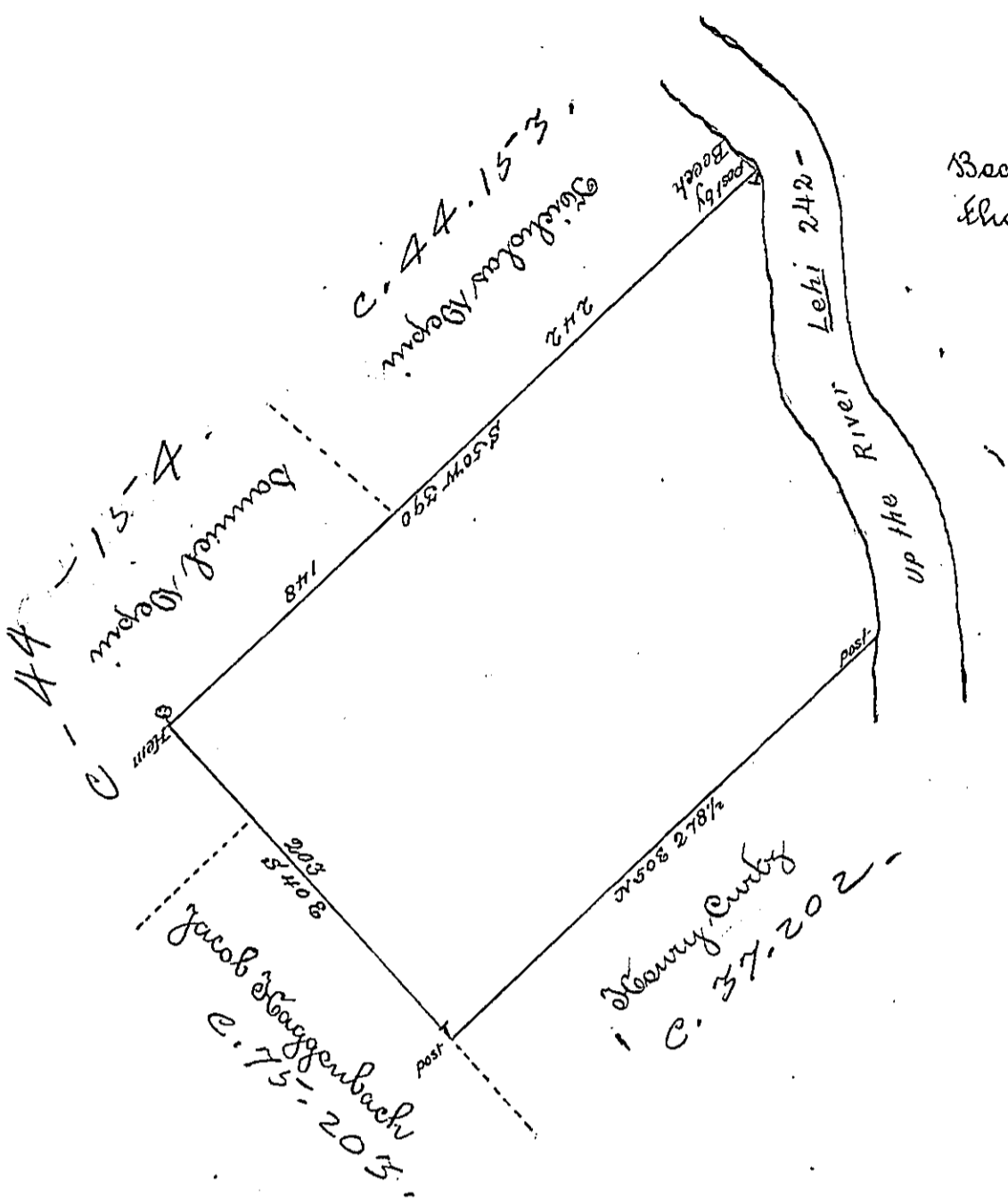


Foster -
LUZERNE



Bearing & distance up
the River Lehi are

1. N 158 16
2. N 11 11 W 68
3. N 40 11 W 56
4. North 102

242.

By Virtue of a Warrant dated the 4 April 1792. Surveyed the 12 September 1793 to Frederick Boller the above described tract of land situate on the West side of the River Lehi below Cramers Cabin and about 20 miles above Gallen-hullen in the County of Northampton Containing Three hundred and ninety five acres an half and the allowance of Six & Cent & Co.

To Daniel Brodhead Esq }
Surveyr General } & Geo Palmer D.S

IN TESTIMONY that the above is a copy of the original remaining on file in the Department of Internal Affairs of Pennsylvania, made conformably to an Act of Assembly approved the 16th day of February, 1833, I have hereunto set my Hand and caused the Seal of said Department to be affixed at Harrisburg, this first _____ day of December 1896.

James W. Patton
Secretary of Internal Affairs.